

# Saint Leo Magnus Roman Catholic Church

A Pennsylvania Charitable Trust

Sharing the Good News of Jesus Christ in Elk County since 1874

111 Depot Street + Ridgway, Pennsylvania + 15853  
814.772.3135 FAX 814.772.6627 [stleomagnus@comcast.net](mailto:stleomagnus@comcast.net)

The Reverend Father Justin P. Pino, Pastor  
Lawrence M. Caggese, Deacon Assistant

FOURTH SUNDAY OF LENT

MARCH 31, 2019

## LITURGY SCHEDULE

Saturday Vigil: 5:15 p.m.

Sunday Masses: 8:00 a.m. & 10:00 a.m.

Daily Mass: 8:30 a.m.

Holy Day Masses: Evening before 6:00 p.m.  
8:30 a.m. & 12:05 p.m. on the Holy Day

## RECONCILIATION

Saturdays at 4:30 p.m. or by appointment  
with Fr. Justin

## BAPTISM

Please call the rectory for scheduling.

## MARRIAGE

Please notify the pastor at least 6 months  
before the marriage.

## ANOIDING OF THE SICK

Call anytime for emergencies. Notify the  
office if someone is hospitalized, seriously ill,  
or in need of a priest.



## PARISH CONTACTS

**Pastor** - Father Justin Patrick Pino, [frjustin@comcast.net](mailto:frjustin@comcast.net)

**Office Manager** - Rena Urmann, [stleomagnus@comcast.net](mailto:stleomagnus@comcast.net)

**Business Manager** - Stephen Vallone

**Director of Religious Education** - Marjorie Gausman

**Director of Physical Plant** - Dan Bloam

**Director of Liturgical Music** - Al Larnder

**Parish Council President** - Andy Messineo

**Finance Council Chairperson** - Dawn Forringer

**Cemetery Caretakers** - Art & Mary Therese Cianca

## SCHOOL CONTACTS

### St. Leo School

Lynne Kucenski, Principal  
[kucenskil@eccss.org](mailto:kucenskil@eccss.org) 814-772-9775

### Elk County Catholic School System

Sam MacDonald, President  
[macdonalds@eccss.org](mailto:macdonalds@eccss.org) 834-7800

# THE PARISH FAMILY OF SAINT LEO MAGNUS IN RIDGWAY, PENNSYLVANIA



## THIS SATURDAY AND SUNDAY

### **Fourth Sunday of Lent - Laetere Sunday**

5:15 p.m. Genevieve Stanley (Ed & Tina Aiello & Family)  
8:00 a.m. Veronica DePanfilis, birthday (Family)  
10:00 a.m. People of St. Leo Parish

### MONDAY, April 1

8:30 a.m. Ruth Krizan (Bill & Teddy Urmann)  
6:00 p.m. Jonathan Molinari (Mary Molinari)

### TUESDAY, April 2

#### **St. Francis of Paola, Hermit**

8:30 a.m. John Aiello (Wendy & Ronnie Gardner)  
6:00 p.m. NO MASS

### WEDNESDAY, April 3

8:30 a.m. Communion Service  
6:30 p.m. Stations of the Cross

### THURSDAY, April 4

#### **St. Isidore, Bishop & Doctor of the Church**

8:30 a.m. Dora Santiso (Cursillo #233)  
6:00 p.m. NO MASS

### FRIDAY, April 5

#### **St. Vincent Ferrer, Priest**

8:30 a.m. Janice Casolo (Family)

### SATURDAY, April 6

5:15 p.m. Dora Santiso (Dave & Linda)

### SUNDAY, April 7

#### **Fifth Sunday of Lent**

8:00 a.m. Delores & Mike Smithbauer (Family)  
10:00 a.m. People of St. Leo Parish

*We invite family members for whom each weekend mass is being offered to bring the gifts to the altar. Please make yourself known to the usher 15 minutes before Mass.*

## **PARISH OFFICE Hours ~ Monday through Friday**

9:00 a.m. to 12 noon + 1 p.m. to 4 p.m.

## EVENTS THIS WEEK

### Today Sunday, March 31

6 p.m. Community Rosary - Church

### Tuesday, April 2

9 a.m. - 9 p.m. Adoration - Church  
6:30 p.m. That Man Is You meeting - K of C

### Wednesday, April 3

6 p.m. St. Leo Religious Ed Class  
6:30 p.m. Stations of the Cross - Church  
6:30 p.m. First Communion meeting - Social Hall  
6:30 p.m. Penance Service - Queen of the World, St. Marys

### Thursday, April 4

9 a.m.-6 p.m. Adoration - Church  
6:30 p.m. Penance Service - St. Leo Magnus

### Friday, April 5

7 p.m. Open Mic Night - K of C

### Sunday, April 7

3 p.m. Penance Service - St. Mark, Emporium  
6 p.m. Community Rosary - Church

## **Ministry Schedule for April 6 & 7**

	5:15 p.m.	8:00 a.m.	10:00 a.m.
Altar Server	R Duffield J Gardner	D Gess A Gahr	S Zamoski I Macer
Lector	N Murphy	J Gangloff	C Aiello
Eucharistic Ministers	L Caggese J Wonderly C Armanini* N Petrosky*	N Murphy J Allenbaugh	R & D Foringer N Hoffman* S Schutz*
Ushers	<i>Volunteer</i>	<i>Volunteer</i>	<i>Volunteer</i>

## **Ministry Schedules for the week of April 7**

### **Ridgmont**

J Allenbaugh

### **High Rise**

N/A

### **Money Counter**

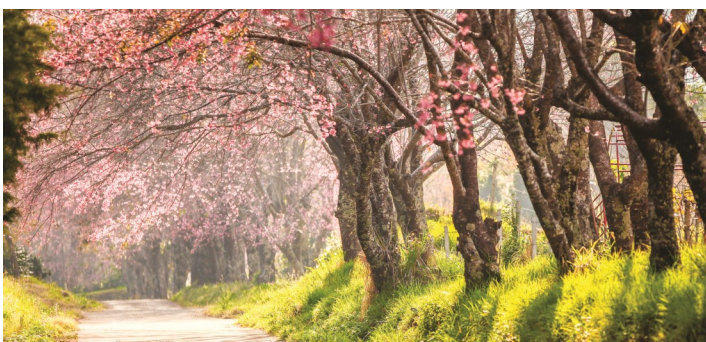
Team 1

### **Alter Guild** For 4/5

Group 5, Pew 6

## **Ministry Schedule 6 pm Mass**

	Mon 4/1	Tue 4/2	Wed 4/3 STATIONS ONLY	Thu 4/4
Altar Server	D Constable J Williams	NO MASS	R & E Mess- ineo Jos Toncich	NO MASS



"He said to him, 'My son, you are here with me always; everything I have is yours. But now we must celebrate and rejoice, because your brother was dead and has come to life again; he was lost and has been found.'" - Lk 15:31-32

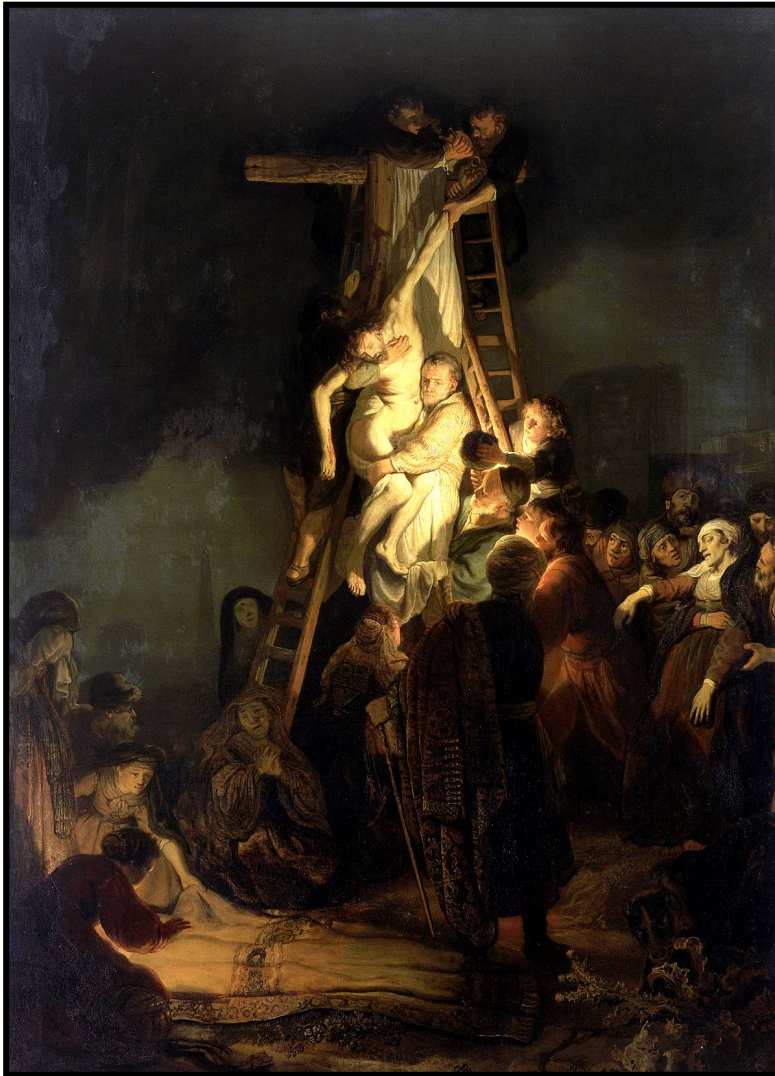


## From the Pastor's Desk

My dear parish family:

We have reached the half way point - more than half way - of our Lenten journey. Today is Laetere Sunday since the joy of Easter is coming closer. But Jesus' journey is not yet over. This week Jesus has left His earthly and human life behind; His holy body is taken down from the Cross. This image is by the famous artist Rembrandt, painted in 1634. ***Look at the image in all its detail - put yourself in the scene - meditate on the Lord's Passion.***

The ***Descent from the Cross***'s a classic scene in religious themed art. While the scene is crowded, each person in the image has a specific facial expression, for the most emotion. This emotion is open mourning of the pensive, silently tense grief displayed by the Mary, is portrayed in the having fainted from the and sadness. She is physically, and likely by the other bystanders. portrayed in a realistic slumped and twisted he is carried down the lifeless quality of his the body are the marks of the stigmata on Jesus' Lighting of this image is strategized upon certain groupings of bystanders. light is highly varied. brightest areas are on promoting it as the focal the darkest area in the inky background. candles provide the light the scene takes place at types of candles and different intensities of varying in degree, light



has a specific facial part wracked with shown in the weeping, women, and the more expressions of inner men. Jesus' mother, work as unconscious, overwhelming grief portrayed as mentally, supported Jesus himself is fashion, with his body rather unsettlingly as cross displaying the form. Also evident on the thorn crown and hands and feet. very elaborate and figures creating The intensity of the The lightest and Jesus' body, point of the piece, and unlit, nearly black, Various torches and shed on the figures, as night. The different torches provide light. Although specifically

illuminates, and delineates, three main groups These groups are Jesus and the people carrying him, women laying out what appears to be a burial cloth, and Mary and her supporters. This strategic lighting seems to create a sort of order to the work, shedding light on what has happened, what will happen next, and the effect it has on others. (*Ragghianti, Great Museums of the World: Hermitage, Leningrad, 88.*)

May these days of Lent strengthen our faith and love for Christ! **Father Justin**

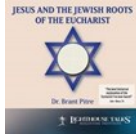




## LIGHTHOUSE CD OF THE WEEK

### Jesus and the Jewish Roots of the Eucharist

Dr. Brant Pitre uses the Hebrew Scriptures and Jewish tradition to frame the actions of Jesus at the Last Supper, and to provide a fresh look at the heart of Catholic practice — the Eucharist. By taking us back to the Jewish roots of our faith, Dr. Pitre gives us a powerful lens through which to see anew the bread of the presence, the manna, the Last Supper, and ultimately the meaning of the Eucharist.

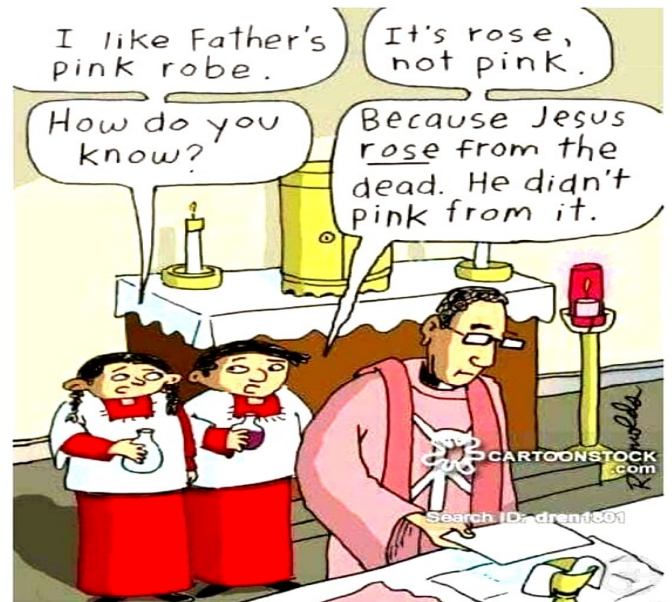


I love it when the Old and New Testaments are tied together and explained so clearly; it makes you realize how much God has thought of us throughout time and how carefully He has planned for us. Dr. Pitre beautifully simplifies the depth and magnificence of The Eucharist. Theresa - Rock Hill, SC

*The Parish offers our prayers and sympathy to the families of Mary Krasinski and Angelarose "Dolley" McCoy who died recently. May they, and all the faithful departed, rest in eternal peace!*



*The hosts and wine for the month of March are provided in memory of Larry Johnson from the Friday Fish Fry Guys.*



### Prayer Chain

Call our Prayer Chain Coordinator  
**Felcia Nelson at 814-772-5460**  
if you, or someone you know,  
are in need of prayers



*Beautiful shining souls*

Our Second Grade Students with Fr. Justin after receiving the sacrament of First Penance

# FORMED™

THE CATHOLIC FAITH.  
ON DEMAND.



**A Lent to Remember** is a four-week, video-based study that uses Augustine Institute original productions *Forgiven* and *Symbolon* to present the power of God's love and mercy in his Paschal Mystery and in the Sacrament of Reconciliation.

**Session 4: The Paschal Mystery** - "The Paschal Mystery" is a phrase we hear and use in the Mass and sacramental rites, but do we understand what it means in the greater story of Salvation, from the Passover in Egypt to the Last Supper and Crucifixion of Jesus?

**Log on to Formed.org and enter code 39WTZD to begin enjoying your free subscription.**

## Penance Service Schedule

Queen of the World, St. Marys	Wednesday, April 3	6:30 p.m.
St. Leo's Ridgway	Thursday, April 4	6:30 p.m.
St. Mark Emporium	Sunday, April 7	3:00 p.m.
St. Joseph, Force	Sunday, April 14	3:00 p.m.
St. Mary, St. Marys	Tuesday April 16	6:30 p.m.

## CD of A

**Monthly meeting**  
**April 9th at 6:30 p.m.**  
**In the Social Hall**  
**Please make every effort to**  
**attend**

## \*\*NOTICE\*\*

### Spring Clean up at St. Leo Cemetery

Please remove all old plants from cemetery plots by **April 15th**. We are preparing the cemetery for the summer months. Any pots/plants etc. not removed will be discarded.

St. Leo Cemetery Association

## Baptism Preparation Class for first time parents and Godparents

April 6	10 am	Sacred Heart, St. Marys	834-7861
April 16	7 pm	St. Leo Magnus Ridgway	772-3135
May 7	7 pm	Queen of the World St. Marys	834-4701
June 6	7 pm	St. Mary's St. Marys	781-1019

\*Please call ahead for reservations



## REPENTANCE & GROWTH

## 2019 Cursillo Dates

May 16-19 Men's Cursillo #248 at Our Lacy of Mercy, Harborcreek

June 20-23 Women's Cursillo #255 at ECC High School, St. Marys

Mark and Kellie Martinez would love to talk to you about Cursillo and how it can change your life.





### St. Leo's School Fundraiser

#### Snakebite Bowling Tournament

\*Strikes, splits and 9 counts are strikes!

Sunday, April 7th

at Jireh Lanes

2 person team-\$15 person

All ages welcome to  
sign up as teams.

Sign up for  
1pm or  
4pm shift!

All bowling  
proceeds benefit  
St. Leo's School

Cash prizes  
awarded!

Call 885-6380  
or text  
594-3217 to  
sign up!



Join us for an afternoon of bowling, family and fun!

#### Bulletin Submission Deadlines

Submission Date	Publication Date
April 5	April 14
April 12	April 21

### STEWARDSHIP

**March 24, 2019**

Weekly offertory.....\$ 7640.00  
(includes flowers, school, collections)

#### WAYS TO REMEMBER



There are many ways to  
memorialize both living and  
deceased family and friends:

Mass -- \$10

Sanctuary Candle -- \$10/wk

Hosts and Wine -- \$40/month  
(beginning in Jan. 2019)

Beat the Heat/Cancel the Cold -- \$10/day

Memorial Space on the bulletin ads - \$50/wk

Or anything you would like to see in the parish -  
statues, artwork, equipment.

*Please contact Rena in the office or Father Justin.*

## Area News and Notes

### St. Joseph Fish Fry Dinner

St. Joseph's in Force. Every Friday during Lent  
Noon to 6:30

Haddock Dinner - \$11; Fantail Shrimp Dinner - \$12  
Children under 10 - \$7. Call 787-4151.

### St. Boniface Fish Fry Dinner

Every Friday during Lent

Fish, Shrimp or Chicken Tenders \$12

St. Boniface, Kersey 4-6:30 &

Holy Cross, Brandy Camp 4:30-7:30

### St. Joseph's in Lucinda Fish Dinner

Every Friday during Lent

4 to 7 pm

Fish Dinner: \$10, Jumbo Shrim Dinner: \$11,  
Crab Leg Dinner: \$20

### Queen of the World Retreat

March 31, April 1 & 2 at 7 pm

On Monday and Tuesday, the evening will begin with Mass  
followed by a reflection given by Fr. Ross Miceli. Everyone is  
invited and encouraged to attend this Lenten Retreat.

### Sacred Heart Spring Food Fest

April 13 from 9 am to 2 pm

Sacred Heart Parish Center. Breads, Sweets, Soups and  
more!

### Sacred Heart Super Bingo

Friday, April 5 at Sacred Heart Parish Center

Doors open at 4:30; Free Lunch at 5:30; Early Bird at 6:30  
and games begin at 6:45. Early bird Golden Gate @2200.

### ECC Athletic Association Bingo

Sunday, April 14 at ECC Cafeteria

Doors open at 11:45; Free Lunch at 12:30 and Bingo at 1:30.  
Cover All. Bring a friend.

### \$5000 Disney Raffle

One winner will receive a \$5000 gift card toward a vacation  
at ANY Disney destination. \$20/ticket. Each ticket doubles  
as a \$25 coupon toward a vacation booked through Magical  
Memory Planners, LLC. Drawing - May 15th. Proceeds  
benefit ECC Music Program. For tickets call Ray 834-7800 or  
Kim 594-1688.





## Adoration

*A reminder that every Tuesday and Thursday from 9:00 am till 9:00 pm the Blessed Sacrament is exposed in the Church for adoration.*

*Lent is a perfect time to spend extended periods of meditation and communion with the Lord in His Eucharistic presence.*

### **PARISH ORGANIZATIONS AND MINISTRIES CONTACT PERSONS**

Cursillo Movement .....	Mark & Kellie Martinez
Parish Festival .....	Chris & Susie Klase
Choir .....	Joey Kepple
Catholic Daughters of America .....	Jan Wonderly
Knights of Columbus .....	John Gangloff
Food Bank .....	Sam & Lois Markert
Prayer Chain .....	Felcia Nelson
Fish Fry .....	Charlie Richards
That Man is You (TMIY) .....	John Gangloff
Cancer Care Ministry .....	Tecla Pontious
Website Manager .....	Frank Quattrone/Rena Urmann
Prison Ministry .....	Molly Fernan
Altar Guild .....	Noel Murphy
Funeral Luncheons .....	Paul & Rita Reed
Money Counters .....	Jane Mago
Eucharistic Ministers .....	Fran & Kathy Greich
Ushers .....	Jim Catalano
Lectors .....	Wee J. Fernan
Altar Servers .....	Joey Kepple
Baptismal Preparation Classes .....	Deacon Larry Caggese
Adoration .....	Dolly MacDonald
R.C.I.A. ....	Lucy & Dave Bobby
Sacristy .....	Deacon Larry Caggese



### **ST. LEO MAGNUS CATHOLIC CHURCH *Membership Form***

Name \_\_\_\_\_ Phone Number \_\_\_\_\_

Address \_\_\_\_\_ City \_\_\_\_\_ Zip \_\_\_\_\_

*Please drop this form into the offertory basket or mail to Parish Office*

- ☐ New Registration
- ☐ Change of Address or Phone
- ☐ Moving Out of the Parish
- ☐ Need Envelopes